

Topic – Free Trial Version

What are the differences between FT Versions & Fully Licensed Versions?

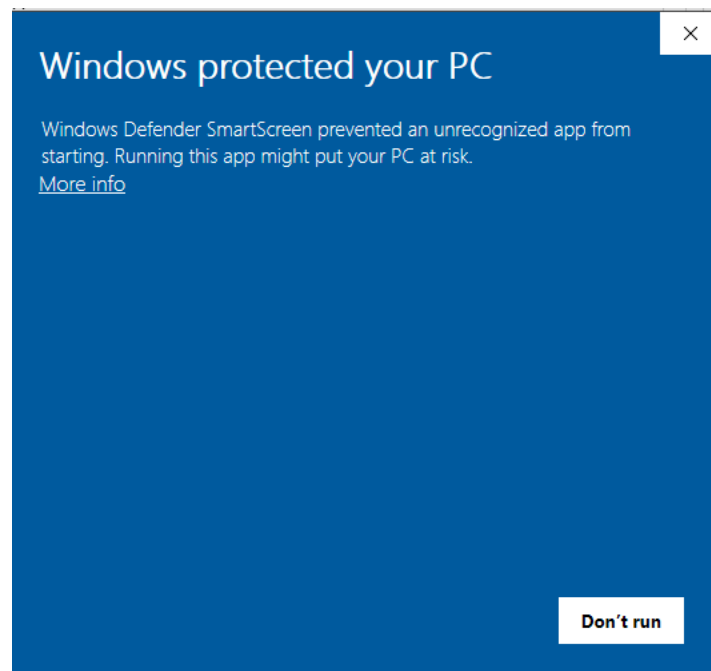
Both versions are identical in functionality and features. The only difference is that the Free Trial (FT) Version has a 90-day countdown timer. At the end of the Free Trial period your Working Sets are automatically copied to a fully functional Excel Spreadsheet that is saved to your PC and the FT Version workbooks will no longer function.

Keep in mind that your SetBilder FT workbooks can easily be converted to the fully licensed version at any time – even after the expiration of the FT version. See the Free Trial Conversion Guide document available on the “VERSIONS” page at <https://SetBilder.com> for details.

Topic – Windows Protected Your PC

When I run the installer – I receive a Windows warning dialog box

Double Clicking on the SetBilder Setup Icon initiates the automated install for SetBilder. During the install process - Windows 10 users running Windows Defender Antivirus may see the following screen:



SetBilder Software is 100% Clean but Windows Defender does not recognize it as a “Secure Application”. You will need to Click on the “More Info” link and verify that you want to continue the install.

Once the install has completed the following files have been copied to your Windows based PC:

- This Quick Start Guide will be placed on your PC Desktop.
- The SetBilder User Guide will be placed on your PC Desktop.
- The Master Workbook will be installed into the “SetBilder” Folder on your PC Desktop.
- The Price Guide File will be installed on the root of your C: Drive in the Folder named “SetBilder”.

Topic - Lower Grade Cards Relative Value Table

When I change the percentage value for Grade 4 cards – the values returned for Grades 1 thru 3 also change?

Yes, that is correct – remember that Grades 1 thru 4 are all calculated as a Percentage of the “1 Grade Above” value. So, when you change the value for “Grade 4” then all subsequent values for Grades 1 thru 3 also change based on that “higher” valuation for the next grade above.

Note the following:

- You can use the “Reset Table Values to Default” SetBilder menu function to remove all of your custom settings in both the “Lower Grade Cards Relative Value Table” and the “3rd Party Grading Scale” tables.
- The calculation of the values for lower end grades, especially POOR & FAIR, in later year sets (1960’s and Up) - as a percentage of the “1 Grade Above Value” can come out very low. For this reason, the available selections in the Percentage Drop Down List have been increased from a maximum of 75% to a maximum of 100% of the next higher grade value.
- Typically, a single change to the Grade 4 Percentage Value will suffice in adjusting all lower grade card valuations.
- All valuation adjustments as a result of changes to the “Lower Grade Cards Valuation Table” (including Reset Tables to Default Values) happen immediately in real time so feel free to experiment.

Topic - Price Guide File

Can I create my own Price Guide File?

Yes, but note that once you create your own price guide file – It will need to be maintained by you going forward as subsequent Price Guide Updates obtained from SetBilder **will overwrite** your custom changes.

To create your own Custom Price Guide Update file – do the following:

- Download the most recent “Price Guide Update” file from the “VERSIONS” page of the SetBilder.com website.
- Open the Price Guide Update and then click the “Review” Menu in the toolbar.
- Select “Unprotect Sheet”
- The Top Left Cell (A1) contains the information returned for “Price Guide Version” on the Summary Page. Customize this cell to reflect something meaningful to you (i.e. “Custom PG January 2020”)
- Make your pricing changes for each card grade and then use the “Save As” function to give the file a relevant name. (i.e. “My Custom PG – January 2020”).
- **Caution** – When modifying pricing values make sure that you **do not** modify Player Names or Card Numbers in the file.
- Open your SetBilder Master Workbook and use the “Update Price Guide” function from the SetBilder Menu to select and import your custom Price Guide Update File.
- Your custom pricing should now be reflected in all of your same Year & same Card Company workbooks. You can verify this by scrolling to the “Summarization” page of any workbook, where the current Price Guide File will be shown at the bottom middle of the screen.

Topic – Managing Multiple SetBilder Versions

I have multiple versions of SetBilder – Can I “nest” my folders?

Yes, SetBilder doesn't really care where it lives on your PC and managing multiple versions (years, card companies, etc.) is easy. Simply create a “Main” SetBilder Folder on your Desktop and then move each of your different version folders into that Main Folder.

To create a Master Folder on your Desktop – do the following:

- Right Click on your Windows Desktop and Select “New” and then “Folder”
- This will create a folder named “New Folder” on your Desktop
- Change the name of this folder from “New Folder” to something relevant to you – such as “All SetBilder Versions”
- Left Click on each of your SetBilder version folders and drag them to this new “SetBilder Versions” folder.
- You now have all of your different version folders in an easily manageable location.

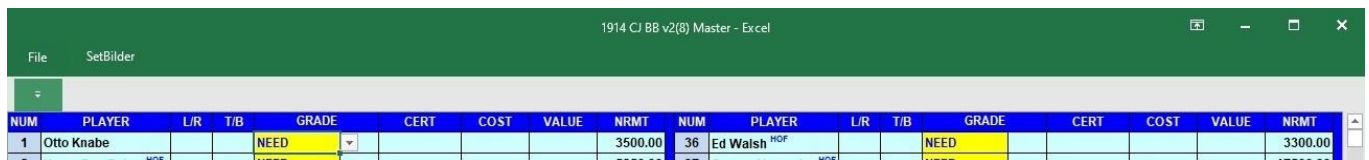
Topic – Grey QAT Bar stuck below SetBilder Menu

I have managed to place a “gray” bar below my SetBilder Menu – How can I fix?

The mysterious gray bar is called the QAT (Quick Access Toolbar) by Excel and is accessed by clicking the very small down arrow which is located at the top left of the Excel Menu Bar above the “File” menu. It is easy to inadvertently add a toolbar (QAT) below the original SetBilder Menu Bar by clicking and selecting “Show Below the Ribbon” in the QAT menu.

It is just as easy to move the QAT bar back to its normal position:

- Once the QAT gray bar has been relocated, to below the SetBilder Menu, it is difficult to see the small arrow that will allow you to move it back to its normal location.
- You can locate the QAT Menu Arrow by hovering over the left side of the grey bar as shown below.



- Once you have located the QAT Menu Arrow – Click and select “Show Above Ribbon”.
- Everything should now be back to normal.